

# a new york style apartment home

ISLAND LODGE, HONG KONG, CHINA 121 M<sup>2</sup>

**The objective here was to transform a spacious four bedroom apartment into a contemporary residence with an uptown Manhattan atmosphere.**

While the false ceiling lit from above spreads indirect light, defining the foyer and creating a formal entrance, the clean and simple rectilinear living space ahead serves as the backdrop for this minimalist urban dwelling, capturing the habourscape beyond the window as an integral part of the home.

The new grey wood flooring creates a cohesive link, and the overall design centers on the contrast between black and white. Stepping into the living and dining area, one encounters a black oak wood

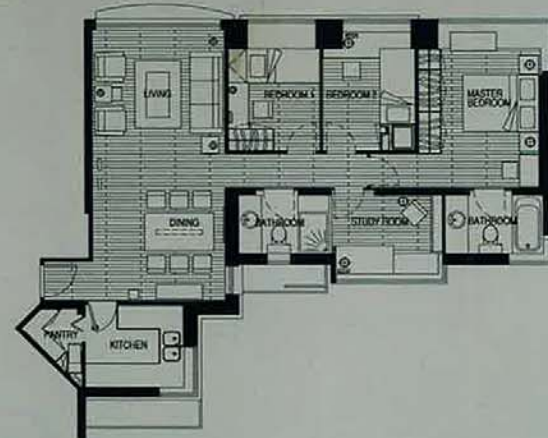
dining table strategically placed with a black and white photo artwork above. Against the dark grey wall, a white leather sofa is placed above which hangs an abstract artwork with a black background and white strokes. This contrasts with the area rug in white wool with black strokes. Black and white predominate, with a palette of grey as mediator. It is a sharp contrast, yet perfectly matched.

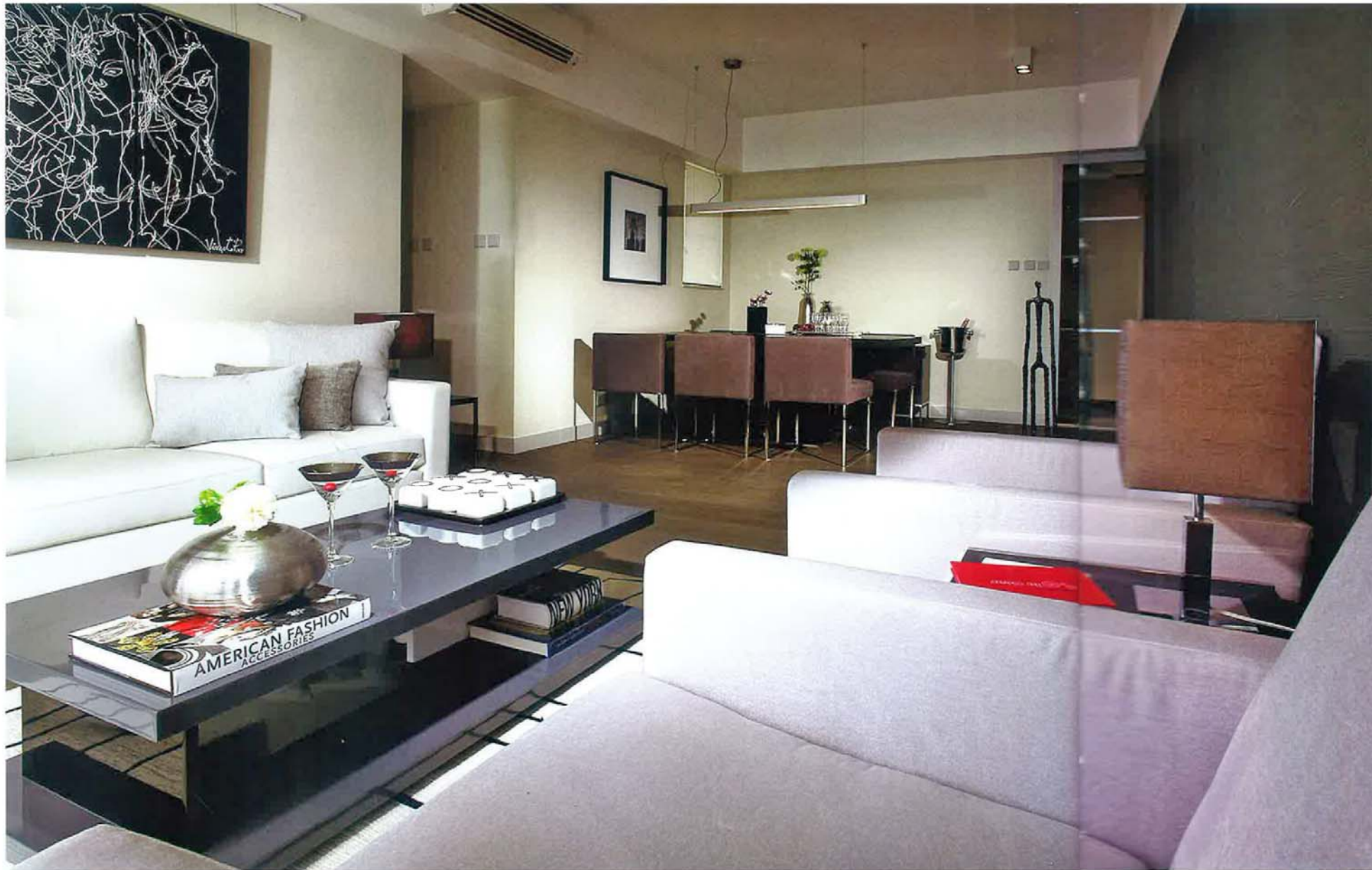
The grey flooring and white wall connect each space visually, the only variation being an accent wall in each room. The color palette graduates from dark grey in the living area, to light grey in

the guest rooms and to bold brown strips in the study; each one is a progressive layering. The introduction of chrome metal edges and black mirror throughout also serve as light reflective elements that highlight the black and white interiors.

The master bedroom features a matte black accent wall in contrast with a row of high gloss wardrobe doors. The bed features white and grey linen. The upholstery offers a variety of tactile sensations which stands out given the subdued restraint of the architectural palette.

While elegance is understated, the aesthetic principles are minimalism and clarity. The design is clean and rectilinear, while detailing is simple but refined. Materials are rich. The color tone is basic, cool and contrasting but in subtle harmony. Together, these elements form a cohesive design that is pure and minimalist, bringing order to the apartment, from furnishings to artwork. This interior is luxurious, yet restrained.







CLIENT/OWNER SWIRE PROPERTIES  
DESIGN FIRM LP ARCHITECTS LIMITED  
PHOTOGRAPHY COURTESY OF LP ARCHITECTS LIMITED

